



Assembly instructions

Great care has gone into the manufacture of this product and it should therefore provide you with years of good service when used properly. In the event of product failure within its intended use over the course of the first 3 years after date of purchase, we will remedy the problem as quickly as possible once it has been brought to our attention. In the unlikely event of such an occurrence, or if you require any information about the product, please contact us via our helpline support services, details of which are to be found both in this manual and on the product itself.



PRODUCED IN CHINA FOR:

ALDI STORES LTD. PO BOX 26, ATHERSTONE
WARWICKSHIRE, CV9 2SH.

Visit us at www.aldi.com

AFTER SALES SUPPORT

96137



GB

00800 / 68546854



monz-gb@teknihall.com

MODEL:
37235

04/2018

3
YEAR
WARRANTY

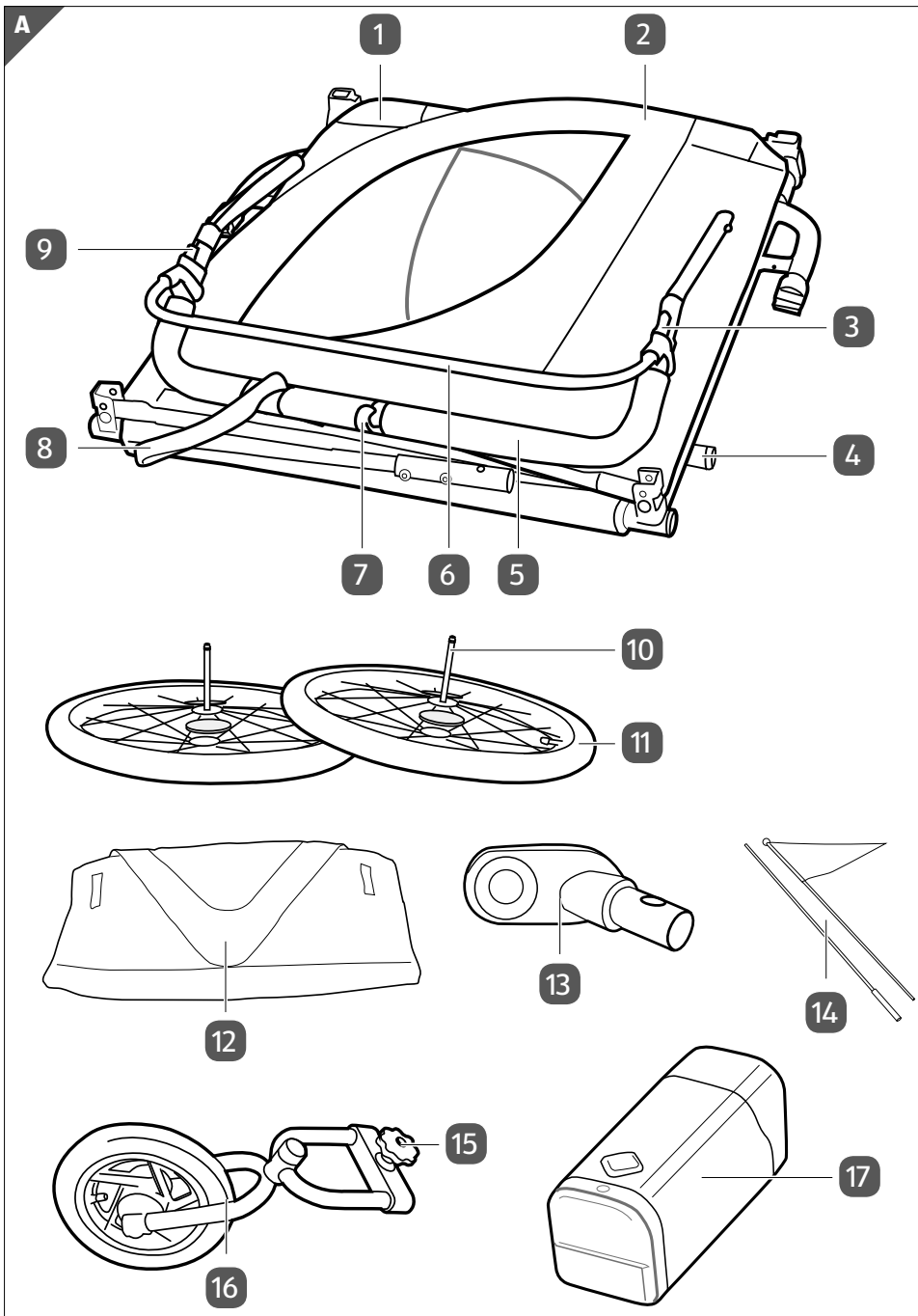


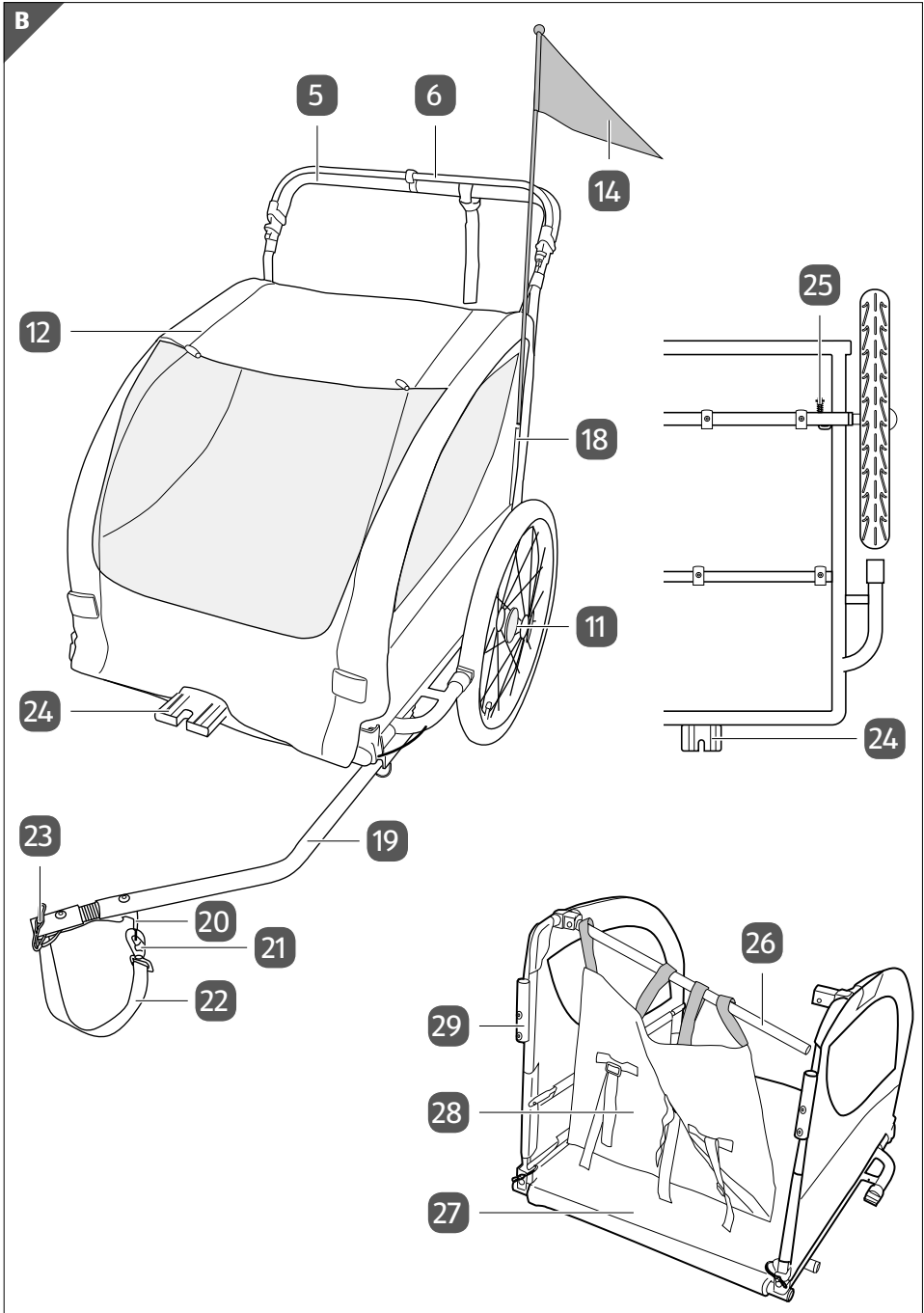
2 IN 1 BIKE TRAILER/STROLLER



Contents

Overview	3
Package contents/parts	5
General information	6
Reading and storing the assembly instructions.....	6
Explanation of symbols.....	6
Safety.....	7
Proper use.....	7
Safety instructions.....	7
Checking the package contents.....	9
Assembly	10
Use	18
Before each ride.....	20
Before your first ride.....	20
When riding with the trailer	21
When using as a stroller	21
Carrying children in the trailer	22
Carrying luggage in the trailer	24
Using the plunger brake.....	24
Using the wrist strap	26
Cleaning and maintenance.....	26
Maintenance.....	27
Storage	27
Technical data	27
Declaration of conformity.....	28
Disposal	28
Disposing of the packaging.....	28
Disposing of the trailer	28
Disposing of the tail light	28





Package contents/parts

- | | | | |
|----|-------------------------|----|--|
| 1 | Right side panel | 21 | Carabiner hook |
| 2 | Left side panel | 22 | Safety strap |
| 3 | Right clamping nut | 23 | Snap pin with safety gripper, 4× |
| 4 | Axle mount, 2× | 24 | Bracket |
| 5 | Handlebar | 25 | Wheel catch, 2× |
| 6 | Brake bar | 26 | Cross bar |
| 7 | Brake clip | 27 | Pocket |
| 8 | Wrist strap | 28 | Rear panel |
| 9 | Left clamping nut | 29 | Mounting cups, 2× |
| 10 | Wheel axle, 2× | 30 | Safety harnesses (see Fig. 17) |
| 11 | Wheel (20 inch), 2× | | |
| 12 | Canopy | | |
| 13 | Trailer adaptor | | |
| 14 | Safety flag | | |
| 15 | Knurled screw | | |
| 16 | Stroller conversion kit | | |
| 17 | Tail light | | |
| 18 | Safety flag slot | | |
| 19 | Tow bar | | |
| 20 | D ring | | |

General information

Reading and storing the assembly instructions



These assembly instructions accompany this 2 in 1 bike trailer/stroller (referred to below simply as the “trailer”). They contain important information about assembly and handling.

Before assembling and using the trailer, read the assembly instructions carefully. This particularly applies to the safety instructions. Failure to follow these assembly instructions may result in serious injury or damage to the trailer.

The assembly instructions are based on the standards and rules in force in the European Union. When abroad, you must also observe country-specific guidelines and laws.

Hold onto the assembly instructions for future reference. If you pass the trailer on to a third party, please be absolutely sure to include these assembly instructions.

Explanation of symbols

The following symbols and signal words are used in these assembly instructions, on the trailer or on the packaging.



This signal symbol/word designates a hazard with moderate risk, which may result in death or serious injury if not avoided.



This signal symbol/word designates a hazard with low risk, which may result in minor or moderate injury if not avoided.



This signal word warns of possible damage to property.



This symbol provides useful additional information about assembly or operation.



Declaration of conformity (see “Declaration of conformity” chapter): Products labelled with this symbol meet all applicable provisions of the European Economic Area.



Certified safety: Products marked with this symbol meet the requirements of the German Product Safety Act (ProdSG).

Safety

Proper use

The trailer is designed exclusively for carrying children between 6 months and 5 years of age. It is intended solely for private use and is not suitable for commercial use.

Use the trailer only as described in these assembly instructions. Any other use is deemed improper and may result in damage to property or even personal injury. The trailer is not a children's toy.

The manufacturer or vendor accepts no liability for damage caused by improper or incorrect use.

Safety instructions



Risk of suffocation and injury!

If children play with the packaging or small parts, they could swallow and choke on these or injure themselves.

- Keep small parts away from children.
- Do not let children play with the packaging.
- Do not leave the trailer unattended during assembly.



Battery hazards!

Improper handling of batteries may result in poisoning, injury and damage.

- Batteries may be life-threatening if swallowed. You should therefore store the batteries so that they are not accessible for small children. If you suspect that a battery has been swallowed or has entered the body in any other way, seek immediate otherwise incorporated, seek immediate medical attention.
- Remove dead batteries from the battery compartment immediately, otherwise they could leak. If a battery has leaked, avoid contact with your skin, eyes and mucous membranes.

In the event of contact with battery acid, immediately flush the affected areas with plenty of clean water and consult a doctor.

- Do not throw batteries in fire. They could explode or release toxic vapours.
- To prevent batteries from leaking, do not charge them, do not disassemble them and do not short circuit them.
- Only use batteries with the same output (see “Technical data” chapter).



Risk of accident!

A covered or non-functional tail light may make it more difficult for other road users to see you.

- Ensure that tail lights are not obscured or affected by any objects.
- Make sure that the tail light is securely attached and fully functional, and that the indicator light in the On/Off switch is lit.
- Check the tightness of the screw on the quick-release bracket regularly before use.



Risk of accident and injury!

Improper handling of the trailer may result in accidents and serious injury.

- Never leave your child in or on the trailer without supervision.
- Make sure that all catches are engaged before use.
- To avoid injuries, make sure that your child is out of reach when unfolding or folding up the trailer.
- Do not let your child play with the trailer.
- Use the safety harness when carrying your child in the trailer.
- The trailer is not suitable for children younger than 6 months old.
- The trailer is not suitable for jogging or skating.

NOTICE!**Risk of damage!**

Improper handling of the trailer may result in damage to the trailer.

- Do not load more than 2.2 kg of luggage into the trailer pocket.
- Stop using the trailer if its parts are torn, cracked or deformed. Only replace damaged parts with corresponding genuine spares.
- Check all screw and push-fit connections at regular intervals and tighten them if necessary. Loose screw connections impair safety.

Checking the package contents**NOTICE!****Risk of damage!**

The trailer can easily become damaged if you open the packaging carelessly with a sharp knife or another pointed object.

- Be very careful when opening.
 1. Remove the individual parts of the trailer from the packaging.
 2. Check to make sure that the delivered package is complete (see **Fig. A**).
 3. Check whether the individual parts of the trailer show signs of damage. If so, do not assemble or use the trailer. Contact the manufacturer at the service address specified on the warranty card.

Assembly



Risk of injury!

Improper assembly or disassembly of the trailer may result in injury.

- Take care when assembling or disassembling the trailer and follow the assembly instructions.
- Keep children away from the area where you are assembling or disassembling the trailer.



Risk of damage!

Improper handling of the trailer may result in damage to the trailer or property.

- Take care when assembling the trailer and follow the assembly instructions.

Assemble the trailer using the following instructions and graphics.



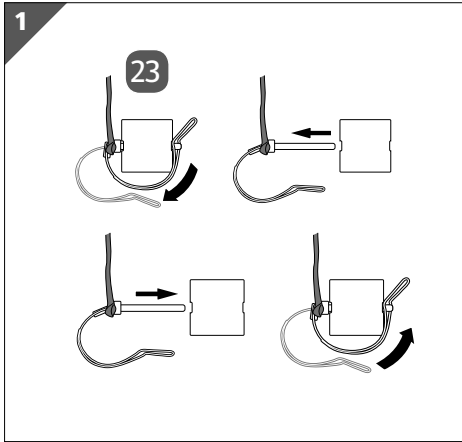
All directions in these assembly instructions (e.g. left, front) are based on the trailer's direction of travel.

1	Assembling the side and rear panels	11
2	Attaching and removing the canopy	12
3	Attaching and removing the handlebar	13
4	Attaching and removing the wheels	13
5	Inserting and removing the safety flag	14
6	Folding the tow bar out and in	14
7	Hitching and unhitching the trailer	15
8	Using the tail light	16
9	Attaching and removing the stroller conversion kit	18

1 Assembling the side and rear panels

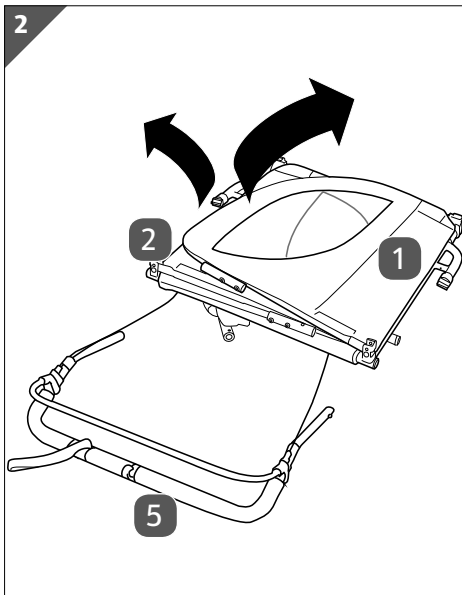
Step 1.1 Fastening and unfastening the snap pin

To assemble and disassemble the trailer, you will need to fasten or unfasten the snap pins and safety grippers **23** on the side panels **1** and **2** and the tow bar **19**.



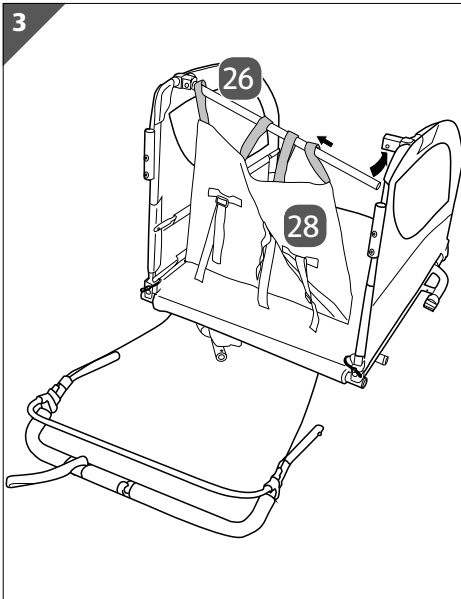
1. Unfastening the snap pin (see **Fig. top**):
Flip the safety gripper down. Pull the snap pin out of the hole.
2. Fastening the snap pin (see **Fig. bottom**):
Slide the snap pin through the hole. Flip the safety gripper up and over the tip of the snap pin. Check that the safety gripper fits the snap pin securely.

Step 1.2 Putting up and taking down the side panels



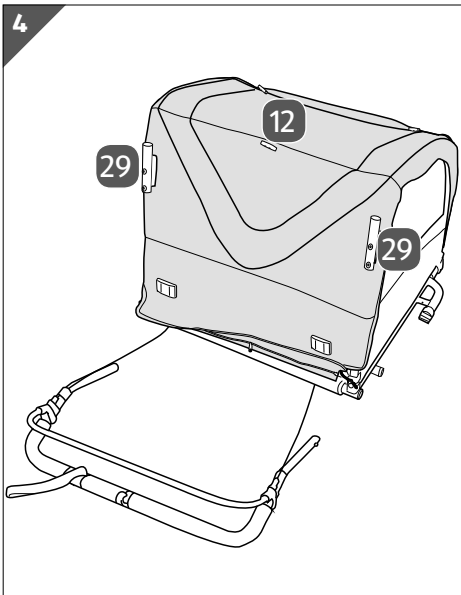
1. Lay out the base unit (see **Fig. A**), consisting of the base, right side panel **1**, left side panel **2** and handlebar **5**.
2. Unfasten the safety grippers of the snap pins **23** for the side panel hinge joints.
3. Fold the side panels upwards.
4. Fasten the snap pins on both side panels.
5. Check that the safety grippers fit the snap pins securely on both side panels.
6. Reverse these steps to take down the side panels.

Step 1.3 Assembling the cross bar and rear panel



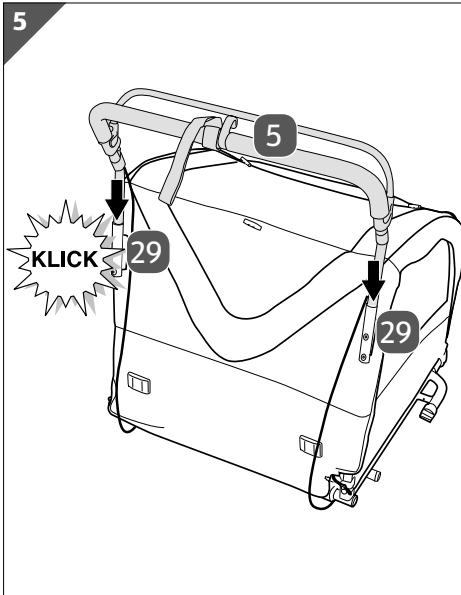
1. Lift the cross bar **26**.
2. Feed the loops of the rear panel **28** onto the cross bar.
3. Swivel the right end of the cross bar into its bracket on the right side panel **1**.
4. Fasten the safety gripper of the snap pin **23**.
5. Unfasten the safety gripper of the snap pin and reverse these steps to dismantle the cross bar and rear panel.

2 Attaching and removing the canopy



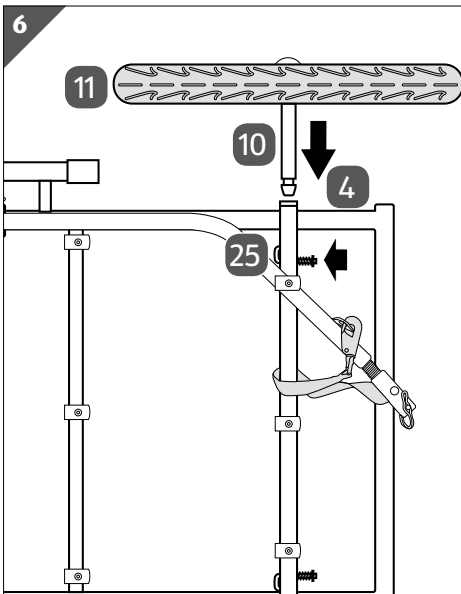
1. Lay the canopy **12** over the upper part of the trailer.
2. Feed the canopy over the mounting cups **29** for the handlebar **5** so that they are clearly accessible.
3. Attach the back of the canopy at the bottom using the Velcro strip.
4. Attach the sides of the canopy using the Velcro strips.
5. Pull the canopy forwards until it completely covers the trailer.
6. Reverse these steps to remove the canopy.

3 Attaching and removing the handlebar



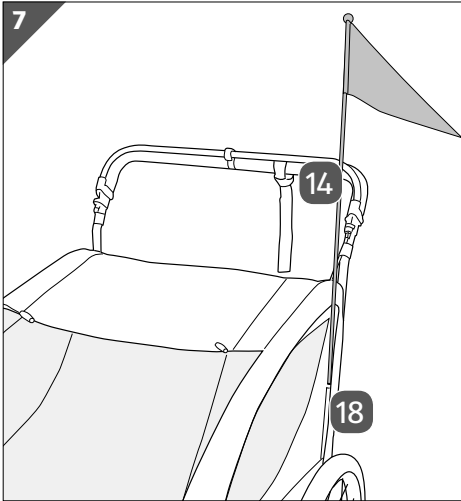
1. Insert the ends of the handlebar **5** into the mounting cups **29**.
2. Press the handlebar downwards until the catch engages with a clearly audible click.
3. To remove the handlebar, press the handlebar catches on the outside of the mounting cups and pull the handlebar out of the cups.

4 Attaching and removing the wheels



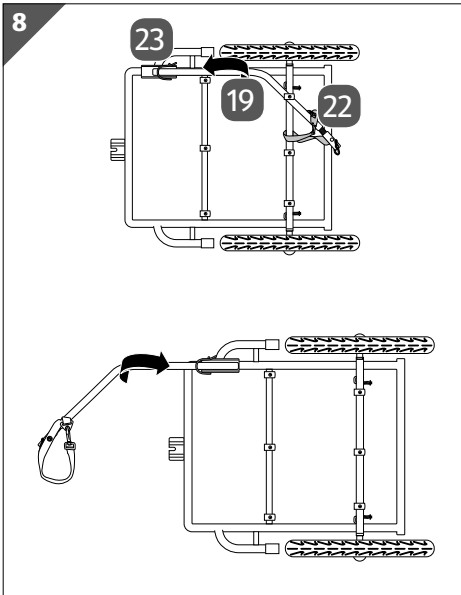
1. Lay the trailer on one side.
2. Insert the wheel axle **10** of one wheel **11** into the axle mount **4**.
3. Press the wheel axle downwards until the catch engages with a clearly audible click.
4. Turn the trailer onto the other side and attach the second wheel.
5. To remove a wheel, press the wheel catch **25** on the axle tube and pull the wheel out of the axle mount.
6. Do the same to remove the second wheel.

5 Inserting and removing the safety flag



1. Connect the two parts of the safety flag **14**.
2. Slide the rod of the safety flag into the safety flag slot **18**.
3. To remove the safety flag, pull it out of the slot.
4. Pull apart the rod of the safety flag.

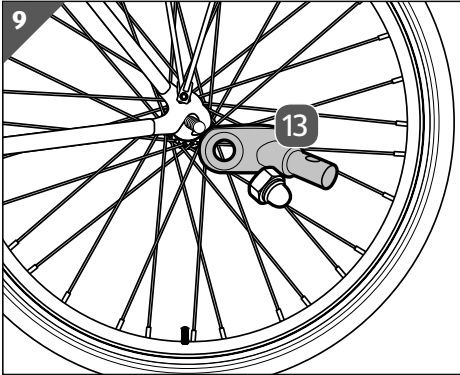
6 Folding the tow bar out and in



1. Lay the trailer on its left side (see **Fig. top**).
2. Unfasten the safety gripper of the snap pin **23** and pull the pin out of the hole.
3. Release the safety strap **22** on the tow bar **19**.
4. Fold the tow bar forwards.
5. Fasten the safety gripper of the snap pin.
6. To fold the tow bar in, unfasten the safety gripper of the snap pin and pull the pin out of the hole.
7. Fold the tow bar underneath the trailer (see **Fig. bottom**).
8. Attach the safety strap to the axle tube.
9. Fasten the safety gripper of the snap pin.

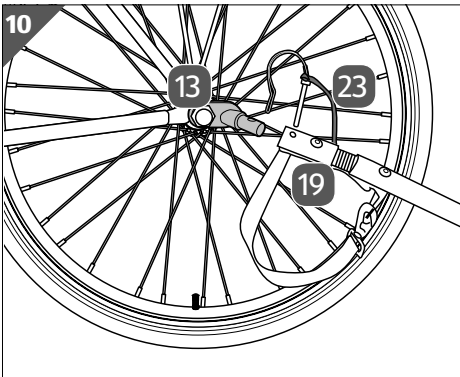
7 Hitching and unhitching the trailer

Step 7.1 Attaching the trailer adaptor to your bicycle



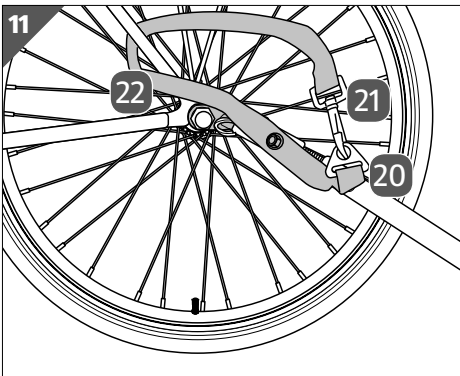
1. Loosen the rear wheel axle screw with a suitable tool (not included in package contents).
2. Place the trailer adaptor **13** onto the rear wheel axle.
3. Tighten the screw fitting with a suitable tool.

Step 7.2 Attaching the tow bar to the trailer adaptor



1. With the aluminium sleeve, slide the tow bar **19** onto the trailer adaptor **13**.
2. Insert the snap pin with safety gripper **23** through the holes in the tow bar and the trailer adaptor.
3. Fasten the safety gripper of the snap pin to secure this connection.

Step 7.3 Attaching the safety strap

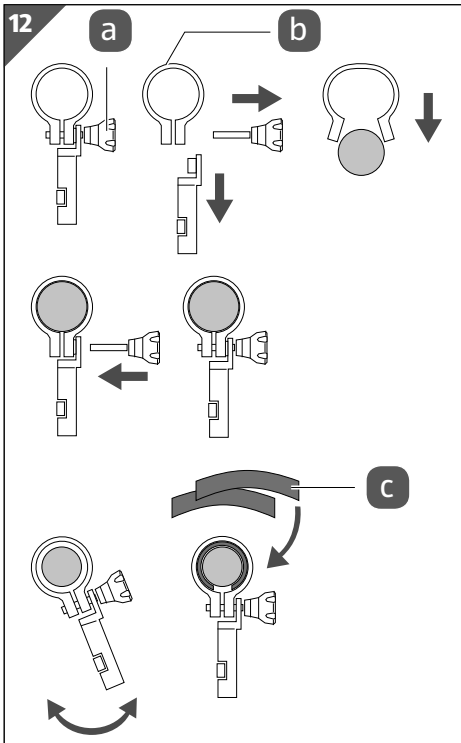


1. Loop the safety strap **22** around the seat stay.
2. Using the carabiner hook **21**, attach the safety strap to the D ring **20** on the tow bar **19** from the outside.
3. Check that the trailer is securely attached to the rear wheel axle of the bicycle.
4. Reverse these steps to unhitch the trailer.

8 Using the tail light

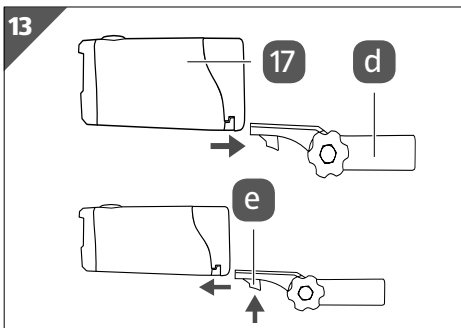
No tools are needed to attach and remove the holding clamp.

Step 8.1 Attaching and removing the holding clamp



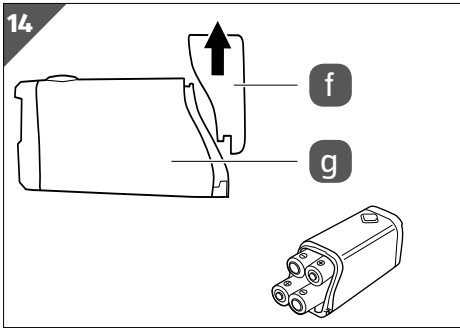
1. Turn the screw **a** anti-clockwise out of the holding clamp **b**.
2. Place the holding clamp on the left-hand mounting cup **29** for the handlebar **5**.
3. Turn the screw clockwise into the holding clamp.
4. If necessary, use 1 or 2 rubber strips **c** to ensure the holding clamp is secure.
5. Reverse these steps to remove the holding clamp.

Step 8.2 Attaching and removing the tail light



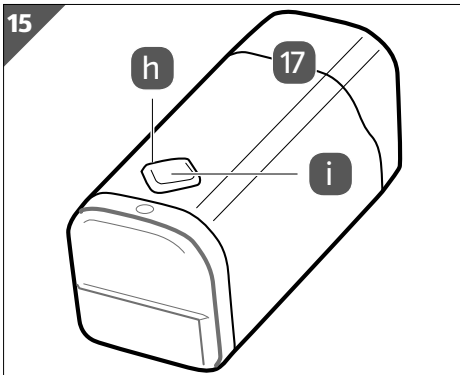
1. Slide the tail light **17** backwards onto the top of the quick-release bracket **d** until the light audibly clicks into place (see **Fig. top**).
2. Press the quick-release bracket lever **e** backwards to detach the tail light (see **Fig. bottom**).
3. Slide the tail light forwards to remove it.

Step 8.3 Inserting batteries



1. Slide the cover **f** of the battery compartment **g** upwards to open it.
2. Insert four AAA batteries (not included in package contents) into the battery compartment. Make sure to match the polarity specified on the cover as you do so.
3. Slide the cover over the battery compartment opening from the top to close it.

Step 8.4 Switching the tail light on and off

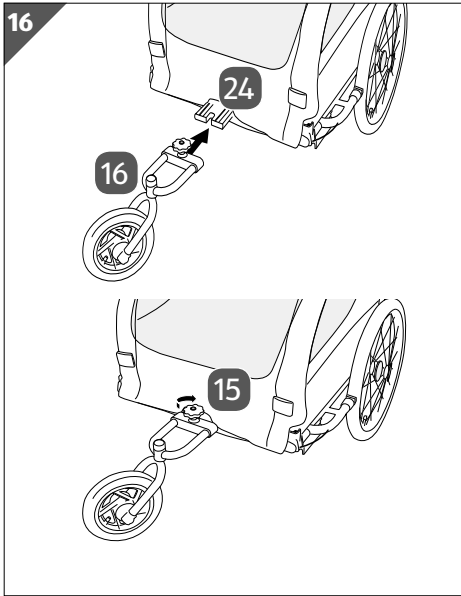


1. Push the On/Off switch **h** on the top of the tail light **17** to switch the light on.
2. Push the On/Off switch on the top of the tail light again to switch the light off.
3. Ensure that the indicator light **i** in the On/Off switch on the top is lit. If the indicator no longer lights up, the batteries must be replaced.



If an LED in the tail light stops working, the entire tail light must be replaced.

9 Attaching and removing the stroller conversion kit



1. Fold in the tow bar **19** (see **Fig. 8**) before attaching the stroller conversion kit **16**.
2. Slide the stroller conversion kit into the bracket **24** (see **Fig. top**).
3. Tighten the knurled screw **15** by turning it clockwise (see **Fig. bottom**).
4. Check that the stroller conversion kit is properly pushed into the bracket and that the knurled screw is hand-tight.
5. Reverse these steps to remove the stroller conversion kit.
6. Remove the stroller conversion kit before using as a trailer.

Use



Risk of accident and injury!

Failure to comply with the conditions of use for the trailer may result in accidents and serious injury.

- The maximum permitted weight for one child carried in the trailer is 9 kg. The maximum permitted weight for 2 children carried in the trailer is 18 kg.
- The trailer must not be used by children:
 - who are younger than 6 months old,
 - who cannot hold their head upright while wearing a helmet,
 - who are older than 5 years old,
 - whose sitting height is more than 59.5 cm.

-
- Do not carry more than 2 children in the trailer.
 - Always strap children in with safety harnesses.
 - Only let children ride in the trailer if they are wearing a bicycle helmet.
 - Allow your child at least 140 mm of headroom.
 - Do not install a car seat or other seating equipment in the trailer.
 - Do not cycle with a hitched trailer at speeds above
 - 13 km/h on straight stretches;
 - 5 km/h when turning.
 - Only use bicycles that have 26" or 28" wheels and are capable of towing a 35.2 kg trailer.
 - Respect the trailer load limit:
 - The maximum trailer load for an unbraked trailer is 40 kg.
 - Fit a wing mirror to your bicycle so that you can monitor children in the trailer.
 - Ensure that children in the trailer do not
 - rock,
 - jump,
 - lean out
 - or stretch out parts of their body.
 - Ensure that neither your child's body, nor their clothing, shoelaces or toys come into contact with moving parts.
 - Never leave your child unsupervised.
 - Do not let your child
 - play with the trailer;
 - assemble, fold up or disassemble the trailer.
 - The trailer is not suitable for jogging or skating.
 - Do not use the trailer on snow or black ice.

- Be aware of the hazards to your child from weather conditions such as
 - wind chill at colder temperatures
 - or heat at warmer temperatures.
- Do not make any modifications to the trailer.
- Before using the trailer, make sure that
 - the rear wheel of your bicycle is suitable,
 - there is no additional load on the trailer adaptor,
 - all catches are engaged,
 - you are complying with all applicable legal requirements.

Before each ride

- Check the condition of your bicycle and the trailer before each use.
- Make sure that
 - the trailer adaptor **13** is secure,
 - the safety strap **22** is attached,
 - the safety harnesses **30** are functional,
 - the bicycle brakes are working,
 - your luggage is secured,
 - the tyre pressure matches the value specified on the tyre wall,
 - the screw connections are adequately tightened,
 - rider and children are wearing bicycle helmets.
- Do not use the trailer if you notice any defects with, deformation to or parts missing from the trailer or your bicycle.
- Have any defects, deformation or missing parts repaired or replaced by a professional before using the trailer.

Before your first ride

- Check the compatibility of your bicycle before hitching the trailer to it.
- To do so, refer to the user manual provided by the bicycle manufacturer.
- Make sure that the bicycle you use with the trailer is in good working order and has good brakes.
- Practice away from road traffic with the trailer carrying the maximum load until you become accustomed to how it alters your bicycle's handling characteristics.

When riding with the trailer

The bicycle rider must be at least 18 years old and in good physical condition.

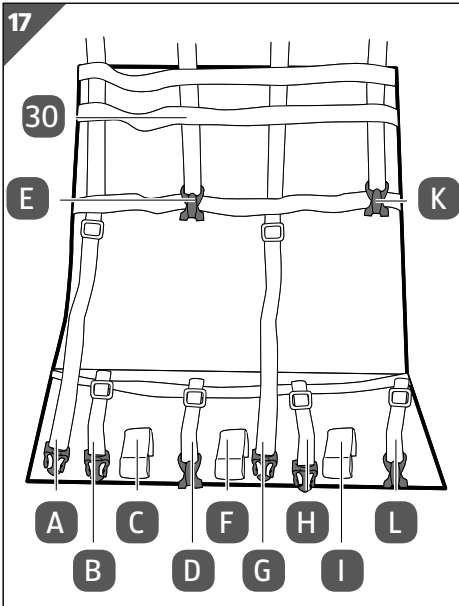
- Respect the maximum permitted load limit of 20.2 kg for luggage and children.
- Observe the speed limits of
 - 13 km/h on straight stretches;
 - 5 km/h when turning.
- Keep in mind that the trailer
 - makes your bicycle significantly longer,
 - gives your bicycle a significantly larger turning radius,
 - makes your bicycle significantly more difficult to control on slopes,
 - gives your bicycle a significantly longer braking distance.
- Start braking early.
- Ride slowly around bends.
- Only use the trailer on even road surfaces.
- Do not ride
 - over kerbs,
 - across potholes,
 - off-road.
- Please note that the trailer's canopy **12** must remain closed at all times during the ride.
- Make sure that the reflectors attached to the front and back of the trailer are functional and visible.
- When using the trailer in the dark, always have the tail light **17** switched on.
- Follow all legal requirements with regard to lighting and reflectors.
- Always use the trailer with the safety flag **14** to improve visibility in road traffic.

When using as a stroller

- Fold in the tow bar **19** before using as a stroller.
- Secure the tow bar to the bottom of the trailer.
- Always use the plunger brake when parked and while children are climbing in and out.

Carrying children in the trailer

- Always check that the trailer is securely hitched to your bicycle and that the bicycle is safely parked when letting children climb into or out of the trailer.
- Always apply the plunger brake while children are climbing in and out.
- Open the canopy **12** and let the children climb in.
- Always use the safety harnesses **30** when carrying children.
- Always have children wear a bicycle helmet in the trailer.



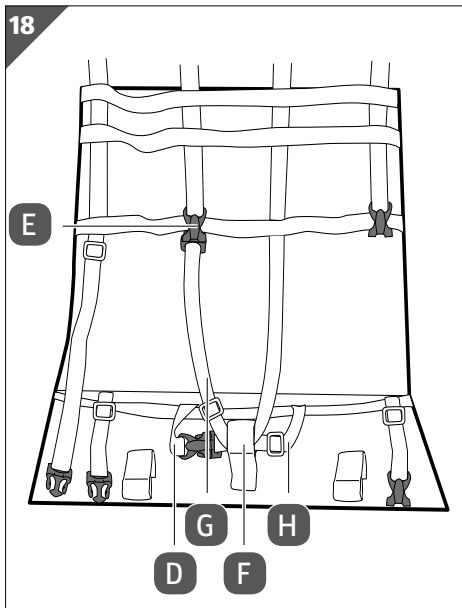
Safety harness components

- A = clasp for left shoulder strap
- B = clasp for left lap strap
- C = left crotch strap
- D = buckle for left lap strap
- E = buckle for left shoulder strap
- F = middle crotch strap
- G = clasp for right shoulder strap
- H = clasp for right lap strap
- I = right crotch strap
- J = buckle for right lap strap
- K = buckle for right shoulder strap
- L = buckle for right lap strap



The safety harnesses are to be used in different ways when carrying one child or two children.

Carrying one child



1. Sit the child in the middle of the trailer.
2. Pull the crotch strap **F** up between the child's legs.
3. Feed the lap strap clasp **H** through the loop of the crotch strap and into the lap strap buckle **D**.
4. Feed the shoulder strap clasp **G** through the loop of the crotch strap and into the shoulder strap buckle **E**.
5. Make sure that the child is comfortably fastened in with the safety harness.
6. Close the canopy **12**.
7. Reverse these steps and press the respective clasp mechanisms to release the safety harness.

Carrying two children



- When strapping in two children, feed the lap and shoulder straps through the crotch strap loops in the same way as shown in **Fig. 18**.

1. Sit the children on the left and right of the trailer.
2. Pull the crotch strap **C** up between the legs of the child in the left-hand seat.
3. Feed the lap strap clasp **B** through the loop of the crotch strap and into the lap strap buckle **D**.
4. Feed the shoulder strap clasp **A** through the loop of the crotch strap and into the shoulder strap buckle **E**.
5. Pull the crotch strap **I** up between the legs of the child in the right-hand seat.
6. Feed the lap strap clasp **H** through the loop of the crotch strap and into the lap strap buckle **L**.
7. Feed the shoulder strap clasp **G** through the loop of the crotch strap and into the shoulder strap buckle **K**.
8. Make sure that the children are comfortably fastened in with the safety harnesses.
9. Close the canopy **12**.
10. Reverse these steps and press the respective clasp mechanisms to release the safety harnesses.

Carrying luggage in the trailer

NOTICE!

Risk of damage!

Improper handling of the trailer may result in damage to the trailer.

- Do not load more than 2.2 kg of luggage into the trailer pocket.
- Open the trailer canopy **12** at the back.
- Place the luggage into the pocket **27**.
- Close the canopy again.

Using the plunger brake



The trailer is equipped with a plunger brake to reduce the speed of the trailer when pushing and to secure the trailer when parked and while children are climbing in and out.

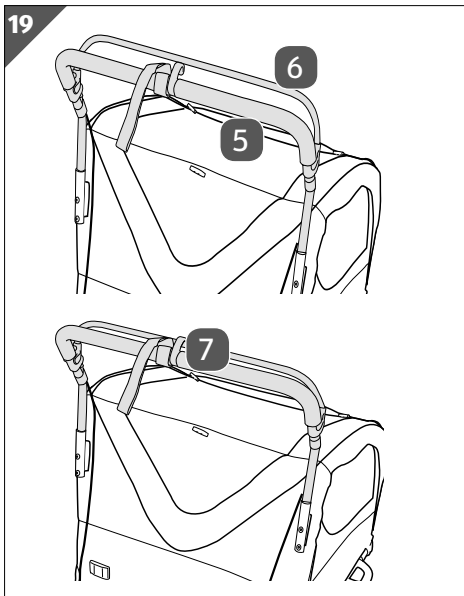


CAUTION!

Risk of injury!

Improper handling of the plunger brake may result in injury.

- When parking the trailer, make sure that the plunger brake is firmly locked in place.
- Check the tyre pressure.
- If necessary, inflate the tyres to the value specified on the tyre wall.
- Check the brake cable tension regularly.
- Adjust the tension of the brake cables if necessary.

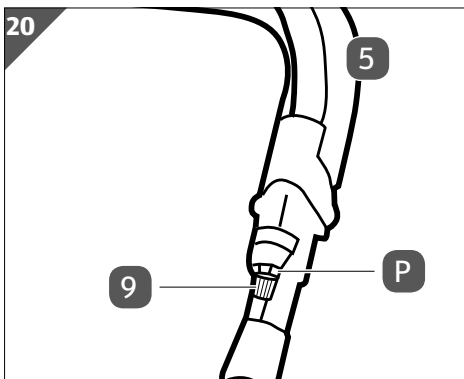


1. Pull the brake bar **6** towards the handlebar **5** to engage the plunger brake (see **Fig. top**).
2. Hook the brake clip **7** around the brake bar to lock the plunger brake in place (see **Fig. bottom**).
3. Push the trailer forwards slightly to ensure that the plunger brake stops the trailer.
4. Release the brake clip from the brake bar when you want to move the trailer.

Adjusting the brake cables

Using the plunger brake causes the tension of the brake cables to change.

- Check the brake cable tension.
- Adjust the tension of the brake cables if necessary.



1. Turn the counter nut **P** between a quarter turn and half a turn clockwise.
2. Turn the left clamping nut **9** upwards to increase the tension of the brake cable.
3. Pull gently on the brake cable as you do so to make the left clamping nut easier to turn.
4. Check whether the brake cable tension is high enough.
5. Repeat the process if necessary.
6. Turn the counter nut anti-clockwise until tight.
7. Repeat to adjust the right clamping nut **3**.

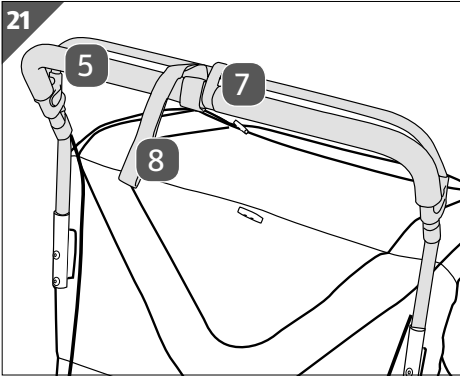
Using the wrist strap



Risk of accident and injury!

The trailer rolling away may result in accidents and injury.

- Always use the wrist strap when pushing the trailer.



1. Always push one wrist through the wrist strap **8** and use the same hand to hold the handlebar **5**.
2. Unfasten the brake clip **7** and release the plunger brake to push the trailer.

Cleaning and maintenance

NOTICE!

Risk of damage!

Improper handling of the trailer may result in damage to the trailer.

- Do not use harsh cleaners, brushes with metal or nylon bristles, or any sharp or metallic cleaning implements such as knives, hard scrapers, etc. These could damage the surfaces, reflectors and tail light.

1. Remove dirt with a damp cloth and, if necessary, a small amount of mild detergent.
2. Afterwards, wipe the trailer dry with a lint-free cloth.

Maintenance

- Check all snap pins **23** regularly and re-fasten them if necessary. Loose snap pins affect safety and pose a risk of injury.
- Repair or replace any damaged or missing parts of the trailer using only spares or accessories approved by the trailer manufacturer.
- Only replace tyres with road-tread tyres and not with BMX or off road tyres.
- Apply a waterproofing treatment to the trailer's outer material every 6 months to preserve the water resistance.

Storage

All parts must be clean and completely dry before being stored.

- Always store the trailer in a dry place.
- Protect the trailer from direct sunlight.
- Store the trailer securely, out of reach of children, and at a temperature between 5 °C and 20 °C (room temperature).

Technical data

Model:	37235
Batch:	P030000334
Nominal weight:	15 kg
Use as bike trailer:	
• maximum speed:	13 km/h
• vertical load:	min. 30 N, max. 80 N
• net load:	18 kg (with 2 children)
• load capacity stowage:	2.2 kg
• permitted total weight:	35.2 kg
Use as a stroller:	
• net load:	30 kg (with 2 children)
• load capacity stowage:	2.2 kg
• permitted total weight:	47.2 kg
Dimensions (W × H × D):	135 × 77 × 106 cm
Article number:	96137

Declaration of conformity



The EU declaration of conformity for the tail light can be requested from the address specified on the enclosed warranty card.

Disposal

Disposing of the packaging



Sort the packaging before you dispose of it. Dispose of cardboard and carton as waste paper and film via the recyclable material collection service.

Disposing of the trailer

- Dispose of the trailer in accordance with the laws and regulations in force in your country.

Disposing of the tail light

(Applicable in the European Union and other European states with systems for the separate collection of reusable waste materials)



Old devices must not be disposed of with household waste!

If at any point it is no longer possible to use the tail light, all consumers are **required by law to dispose of old devices separately from their household waste**, e.g. by taking them to a local/municipal collection point. This ensures that old devices are recycled in a professional manner and negative effects on the environment are avoided. For this reason, electrical devices are marked with the above symbol.



Batteries and rechargeable battery packs must not be disposed of with household waste!

As a consumer you are required by law to take all batteries and rechargeable battery packs, regardless of whether or not they contain hazardous substances*, to a local/municipal collection point or to a retailer so that they can be disposed of in an environmentally friendly manner.

Take the entire tail light (including batteries) to your collection point and make sure that it is in a discharged state!

* labelled with: Cd = cadmium, Hg = mercury, Pb = lead

