



User Manual

Spend a little Live a lot.



BICYCLE LIGHT SET



PRODUCED IN CHINA FOR:
ALDI STORES LTD. PO BOX 26,
ATHERSTONE
WARWICKSHIRE, CV9 2SH

ALDI STORES (IRELAND) LTD.
PO BOX 726, NAAS, CO. KILDARE.
Visit us at www.aldi.com



AFTER SALES SUPPORT

GB IRE 00800 / 68546854
monz-gb@teknihall.com
monz-ie@teknihall.com

Model: JY-7023 / JY-401P / 22203/ P030000087
Product code: 93146 05/2016



Product contents

- 1 Front light, 1x
- 4 Tail light, 1x
- 8 Bracket for the front light, 1x
- 9 Bracket for the tail light, 1x
- 10 AAA battery for the front/tail light, 4x each

General information

Reading and storing the user manual

This user manual is part of this bicycle light set. The bicycle light set comprises the front and tail light. The user manual contains important information on how to use the bicycle light set.

For improved readability, the

- bicycle light set will be referred to only as “bicycle lights” and
- the individual lights will be referred to as “front light” and “tail light” or “bicycle light”

below.

Before using the bicycle lights, read the user manual carefully. This particularly applies for the safety notes. Failure to observe this user manual may result in severe injury or damage to the bicycle lights.

The user manual is based on the standards and rules in force in the European Union. When abroad, you must also observe country-specific guidelines and laws!

Keep the user manual for future use. If you pass the bicycle lights on to third parties, please be absolutely sure to include this user manual.

Explanation of symbols

The following symbols and signal words are used in this user manual, on the bicycle lights or on the packaging.



This signal word designates a hazard with moderate risk, which may result in death or severe injury if not avoided.



This signal word designates hazard with low risk, which may result in minor or moderate injury if not avoided.

NOTICE!

This signal word warns against potential damage to property.



This symbol provides you with useful supplementary information on assembly or operation.



Declaration of conformity (see chapter “Declaration of conformity”): Products marked with this symbol meet all applicable Community regulations for the European Economic Area.

Safety

Proper use

The bicycle lights are only designed for use as bicycle lighting.

Only use the bicycle lights as described in this user manual. Any other use will be deemed as not in accordance with the instructions and may lead to damage of property or injury to persons.

The manufacturer or vendor accepts no liability for damage caused by improper or incorrect use.

Safety notes



Danger of suffocation!

If children swallow packaging or small parts, they may choke.

- Keep packaging parts and small parts away from children.



Danger of explosion!

If you dispose of batteries in an open fire, they may explode and emit toxic vapours.

- Do not throw batteries in an open fire.
- Dispose of batteries at your collection point.



Risk of poisoning!

If children swallow damaged batteries, the batteries could leak and result in poisoning or even death.

- Store the batteries in an area that is not accessible for children.
- If it is no longer possible to securely close a battery compartment, dispose of the respective bicycle light as described in the chapter “Disposal”.

- If you suspect that a battery has been swallowed or otherwise incorporated, promptly consult a physician.



Risk of injury!

Using different types of batteries for the bicycle lights may increase the risk of the batteries leaking. Contact with damaged and leaky batteries may result in injury or chemical burns.

- Do not touch leaky batteries. If you do happen to come into contact with battery acid, wash the affected area thoroughly with plenty of clean water.
- To prevent batteries from leaking, do not charge them, do not disassemble them and do not short circuit them.
- Remove the batteries from the bicycle lights as soon as they are empty.
- Only use batteries with the same output (see chapter “Technical data”).
- Do not use old and new batteries together.



Risk of injury!

The front light exceeds the limits for the “exempt group” according to DIN EN 62471. The light emitted by bicycle lights contains blue light. Blue light wavelengths from 400 nm to 780 nm pose a hazard for the retina. The limit of the “exempt group” is adhered to from 1.2 m.

- Avoid looking directly into the light for prolonged periods of time during operation.
- Wear suitable eye protection or shield your eyes when looking directly into the light.

Assembly

Quick release bracket

- Turn the screw 12 counterclockwise and out of the quick release bracket (see **fig. B**).
- Place the quick release bracket for the front light on the handlebar of the bicycle and tighten it with the screw.
- Place the quick release bracket for the tail light on the seat post of the bicycle and tighten it with the screw.

If necessary, use the rubber strips 13 to ensure a secure fit of the quick release bracket (see **fig. B**).

You have successfully mounted the quick release bracket and can push the bicycle lights onto the quick release bracket.

Bicycle lights

- Push the bicycle lights onto the quick release bracket from the front until they lock into place (see **fig. C**).
- Adjust the bicycle light so that the centre of the light cone is just half as high as the upper edge of the front light at a distance of 5 m (see **fig. D**).

Removal

Quick release bracket

In order to remove the quick release bracket, reverse the steps.

Bicycle lights

Push the lever on the quick release bracket to remove the bicycle light.

Handling

Turning the bicycle lights on and off

Push the On/Off buttons 2 and 6 to switch the bicycle lights on or off (see **fig. A**).



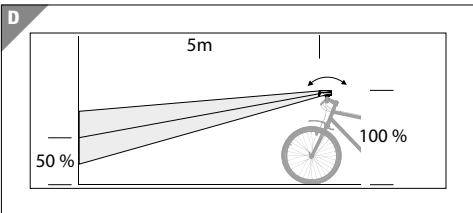
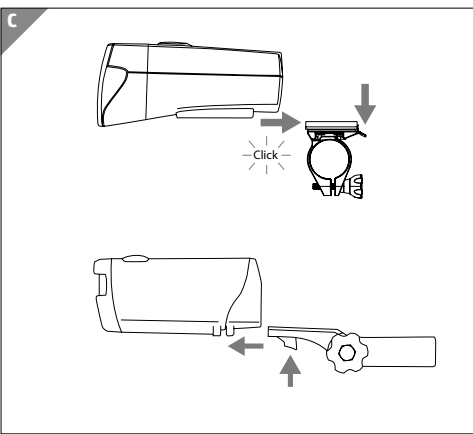
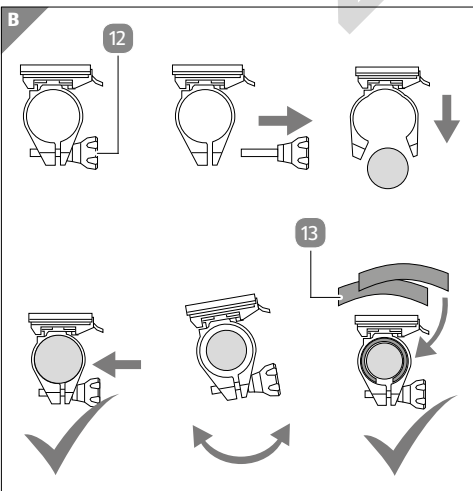
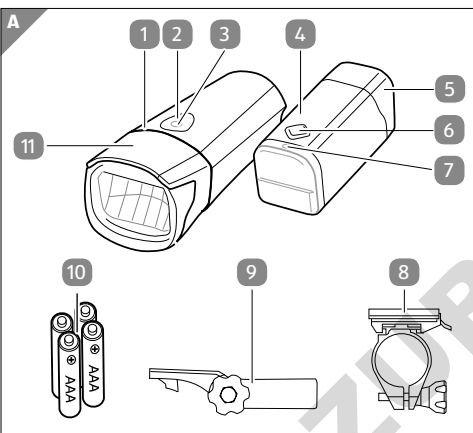
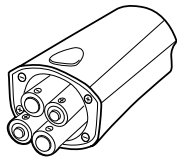
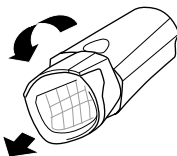
Pushing the On/Off button for the front light twice enables you to reduce its brightness.

Changing the battery

Change the batteries if the battery control light 3 or 7 is illuminated (see **fig. A**). This is the only way to ensure permanent road safety.

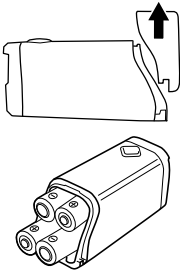
Front light

- Turn the cover lid 11 counterclockwise to open the battery compartment.
- Insert the batteries in the battery compartment. Make sure the polarity is correct.
- Gently push the cover lid onto the battery compartment opening.
- Turn the cover lid clockwise to close the battery compartment.



Tail light

1. Push the cover lid **5** of the battery compartment up to open it.
2. Insert the batteries in the battery compartment. Make sure the polarity is correct.
3. Push the cover lid onto the battery compartment opening from the top to close it.



Old devices must not be disposed of with household waste!
If at some point it is no longer possible to use the bicycle lights, each consumer is required by law **to dispose of old devices separately from their household waste**, e.g. at a collection point in their community/borough. This ensures that old devices are recycled in a professional manner and also rules out negative consequences for the environment. For this reason, electrical devices are marked with the above symbol.

Cleaning and maintenance

NOTICE!

Risk of damage!

- If you clean the bicycle lights improperly, you could damage them.
- Do not use any sharp cleaners to clean the bicycle lights.
 - Clean the bicycle lights with a soft, damp cloth. Use a mild detergent if necessary.
 - Check the secure fit of the screws for the quick release brackets regularly before use.

Disposal

Disposing of the packaging



This symbol indicates that this type of packaging can be recycled through kerbside collection programs, but that this type of wrapping is not currently recycled.

Disposing of old devices

(Applicable in the European Union and other European states with systems for the separate collection of reusable waste materials)

Batteries and rechargeable batteries do not belong in the household waste!

As the end user you are required by law to bring all batteries and rechargeable batteries, regardless whether they contain harmful substances* or not, to a collection point run by the communal authority or borough or to a retailer, so that they can be disposed of in an environmentally friendly manner.

Turn in batteries and rechargeable batteries at your collection point in a discharged state only!

* labelled with: Cd = cadmium, Hg = mercury, Pb = lead

Technical data

Front light	
Article number:	93146
Model no.:	JY-7023
Battery:	4 x 1.5 V LR03 AAA each
Output:	1 W, 30 lux/15 lux
Voltage:	6 V
Dimensions (L x W x H):	9.45 x 4.25 x 3.7 cm

Tail light	
Article number:	93146
Model no.:	JY-401P
Battery:	4 x 1.5 V LR03 AAA each
Output:	0.5 W
Voltage:	6 V
Dimensions (L x W x H):	6.6 x 2.6 x 2.8 cm
Model no. bicycle light set:	22203
Batch no.:	P030000087

Declaration of conformity

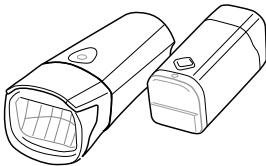


The EU declaration of conformity can be requested from the address specified on the warranty card (at the end of this instruction manual).

WARRANTY CARD



BICYCLE LIGHT SET



Your details:

Name:

Address



E-Mail:


Date of purchase:

* We recommend you keep the receipt with this warranty card.

Location of purchase

Description of malfunction:

AFTER SALES SUPPORT




GB

00800 / 68546854

IRE

00800 / 68546854



GB

monz-gb@teknihall.com

IRE

monz-ie@teknihall.com

MODELL:

JY-7023/JY-401P/22203/P030000087

PRODUCT CODE:

9314605/2016

If after contacting the manufacturer you are requested to return the faulty product please return the completed warranty card together with it.

Monz Service Center
c/o Teknihall Elektronik GmbH
Breitefeld 15
64839 Münster
GERMANY

free of charge
mobile networks
may vary

3

YEARS
WARRANTY

Warranty conditions

Dear Customer,
The **ALDI warranty** offers you extensive benefits:

Warranty period:	3 years from date of purchase.
Costs:	Free repair/exchange. No transport costs.
Hotline:	Free Hotline.
ADVICE:	Please contact our service hotline by phone, e-mail or fax before sending in the device. This allows us to provide support in the event of possible operator errors.

In order to make a claim under the warranty, please send us:

- the faulty item together with the original purchase receipt and the completed warranty card
- the product with all components included in the packaging.

The warranty does not cover damage caused by:

- Accident or unanticipated events (e.g. lightning, water, fire).
- Improper use or transport.
- Disregard of the safety and maintenance instructions.
- Other improper treatment or modification.

After the expiry of the warranty period, you still have the possibility to have your product repaired at your own expense. If the repair or the estimate of costs is not free of charge you will be informed accordingly in advance.

This warranty does not affect your statutory rights.